

## Grand Drive Raynes Park, SW20 9DJ

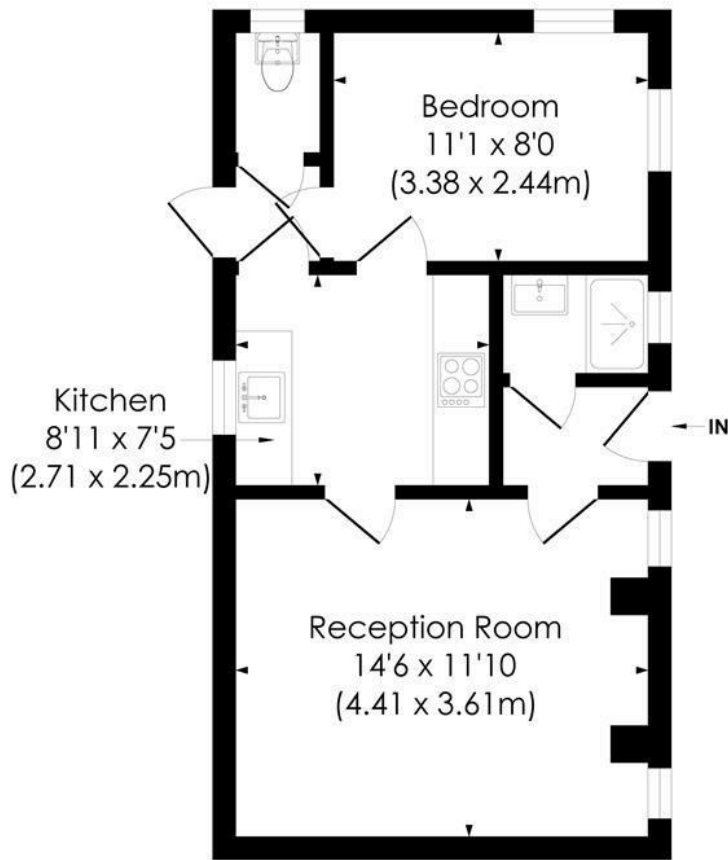
**£325,000 Leasehold**



This charming ONE DOUBLE BEDROOM ground floor flat has its own private entrance, communal parking and access to gardens. There is a spacious reception room, modern kitchen, double bedroom, separate shower room and W.C. Offered to the market with no onward chain. Sold with a newly Extended Lease.

**GRAND DRIVE, SW20**

Approx. Gross Internal Floor Area  
**408 Sq. ft/37.93 Sq. m**



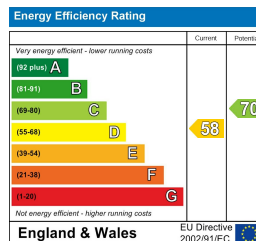
**GROUND FLOOR**

© Pixangle Property Marketing Ltd. info@pixangle.com Tel: 0208 870 2118



This floor plan has been prepared for the purpose of illustration only in accordance with the latest RICS code of measuring practice and is not to scale. All measurements and areas are approximate and whilst every effort has been made to ensure the accuracy of the plan contained here, no responsibility is taken for any error, omission or misstatement.

- One Double Bedroom
- Characterful Ground Floor Flat
- Private Entrance
- Close to Raynes Park Station and High Street
- Communal Parking and Access to Gardens
- Extended Lease
- Well Presented Throughout
- No Onward Chain
- EPC - D
- Council Tax Band - C



Although these particulars are believed to be correct, their accuracy is not guaranteed and they do not form part of any contract.

**Celebrating 30 years of successful Sales and Lettings in Merton**

